

NA032603

# STAINLESS STEEL WALL MOUNTED ENCLOSURES



[www.tekpan.com](http://www.tekpan.com)



## WALL MOUNTED ENCLOSURES

Stainless Steel AISI 304 & AISI 316

Single Door : NEMA 4x





DM COMPACT

# DM WALL MOUNTED ENCLOSURE - STAINLESS STEEL (AISI 304)



## Description:

Wall-Mount / Freestanding with Plinth – Indoor / Outdoor Option (a)  
Single Door , Mounting panel included  
Standards Compliance: UL 50E and IEC 62208



## Protection Ratings :

Protection Ratings: UL/cUL Type 1, 3R, 12, 4, 4x - UL File Number E352599 / IP66 ( IEC 60 529)  
Impact Protection: IK10 according to IEC EN 60529

## Door Types:

130° left hand hinged door ( reverse is possible), one 1/4 turn latch with screwdriver insert (Door Type A)  
130° left hand hinged door ( reverse is possible), two 1/4 turn latches with screwdriver insert (Door Type B , C)  
130° left hand hinged door ( reverse is possible), 3-point latching tool-to-open swing handle with screwdriver insert (Door Type D)

## Materials:

Enclosure, Door: AISI 304 Stainless Steel  
Lock(s): 1/4 turn latches : ABS Plastic Body, zinc insert  
Swing Handle: Zinc + powder coated with zinc insert  
Mounting Panel DX51 Galvanized Steel

**Surface Finish:** Body, Door: Brushed finish

**Supply Includes:** Enclosure (without wall mounting holes) , Door , Mounting Panel

**Options:** Wall brackets, grounding cables, and other accessories

(a): For outdoor applications, an Outdoor Canopy is required.

# ORDERING CODES - DM Stainless Steel (AISI 304)



**A**



**B**



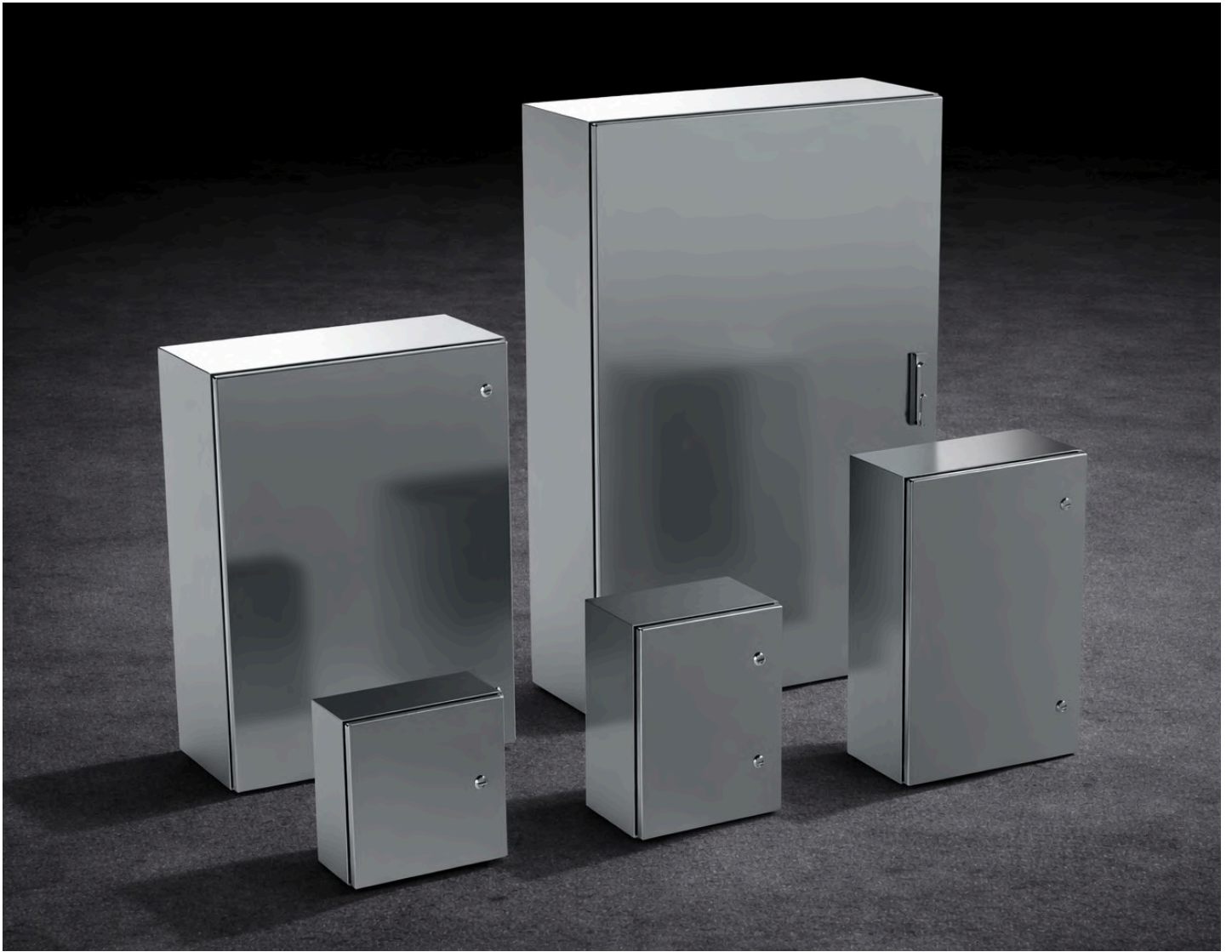
**C**



**D**

Height (H)	Width (W)	Depth (D)	Door Type	Product Code	Mon. Panel Size (mm)		Mon. Panel Size (Inch)	
					H	W	H	W
300mm (11.8")	250mm (9.8")	150mm (5.91")	A	<b>DM U252.315-SS4</b>	275	200	10.83	7.87
300mm (11.8")	300mm (11.8")	210mm (8.3")	A	<b>DM U253.321-SS4</b>	275	250	10.83	9.84
400mm (15.7")	300mm (11.8")	210mm (8.3")	B	<b>DM U253.421-SS4</b>	375	250	14.76	9.84
400mm (15.7")	400mm (15.7")	210mm (8.3")	B	<b>DM U254.421-SS4</b>	375	350	14.76	13.78
500mm (19.7")	400mm (15.7")	210mm (8.3")	B	<b>DM U254.521-SS4</b>	475	350	18.7	13.78
500mm (19.7")	500mm (19.7")	300mm (11.8")	B	<b>DM U255.530-SS4</b>	475	450	18.7	17.72
600mm (23.6")	400mm (15.7")	210mm (8.3")	B	<b>DM U254.621-SS4</b>	575	350	22.64	13.78
700mm (27.6")	500mm (19.7")	260mm (10.2")	B	<b>DM U255.726-SS4</b>	675	450	26.57	17.72
800mm (31.5")	600mm (23.6")	300mm (11.8")	B	<b>DM U256.830-SS4</b>	775	550	30.51	21.65
800mm (31.5")	800mm (31.5")	300mm (11.8")	B	<b>DM U258.830-SS4</b>	775	750	30.51	29.53
1000mm (39.4")	600mm (23.6")	300mm (11.8")	C	<b>DM U256.130-SS4</b>	975	550	38.39	21.65
1000mm (39.4")	800mm (31.5")	300mm (11.8")	C	<b>DM U258.130-SS4</b>	975	750	38.39	29.53
1200mm (47.2")	800mm (31.5")	300mm (11.8")	D	<b>DM U258.123-SS4</b>	1,175	750	46.26	29.53

# DM WALL MOUNTED ENCLOSURE - STAINLESS STEEL (AISI 316L)



## Description:

Wall-Mount / Freestanding with Plinth – Indoor / Outdoor Option (a)  
Single Door , Mounting panel included  
Standards Compliance: UL 50E and IEC 62208



## Protection Ratings :

Protection Ratings: UL/cUL Type 1, 3R, 12, 4, 4x - UL File Number E352599 / IP66 ( IEC 60 529)  
Impact Protection: IK10 according to IEC EN 60529

## Door Types:

130° left hand hinged door ( reverse is possible), one 1/4 turn latch with screwdriver insert (Door Type A)  
130° left hand hinged door ( reverse is possible), two 1/4 turn latches with screwdriver insert (Door Type B , C)  
130° left hand hinged door ( reverse is possible), 3-point latching tool-to-open swing handle with screwdriver insert (Door Type D)

## Materials:

Enclosure, Door: AISI 316L Stainless Steel  
Lock(s): Body and insert AISI 316  
Mounting Panel: DX51 Galvanized Steel

## Surface Finish:

Body, Door: Brushed finish

**Supply Includes:** Enclosure (without wall mounting holes) , Door , Mounting Panel

**Options:** Wall brackets, grounding cables, and other accessories

(a): For outdoor applications, an Outdoor Canopy is required.

# ORDERING CODES - DM Stainless Steel (AISI 316L)



**A**



**B**



**C**



**D**

Height (H)	Width (W)	Depth (D)	Door Type	Product Code	Mon. Panel Size (mm)		Mon. Panel Size (Inch)	
					H	W	H	W
300mm (11.8")	250mm (9.8")	150mm (5.91")	A	<b>DM U252.315-SS6</b>	275	200	10.83	7.87
400mm (15.7")	300mm (11.8")	210mm (8.3")	B	<b>DM U253.421-SS6</b>	375	250	14.76	9.84
400mm (15.7")	400mm (15.7")	210mm (8.3")	B	<b>DM U254.421-SS6</b>	375	350	14.76	13.78
600mm (23.6")	400mm (15.7")	210mm (8.3")	B	<b>DM U254.621-SS6</b>	575	350	22.64	13.78
700mm (27.6")	500mm (19.7")	260mm (10.2")	B	<b>DM U255.726-SS6</b>	675	450	26.57	17.72
800mm (31.5")	600mm (23.6")	300mm (11.8")	B	<b>DM U256.830-SS6</b>	775	550	30.51	21.65
1000mm (39.4")	800mm (31.5")	300mm (11.8")	C	<b>DM U258.130-SS6</b>	975	750	38.39	29.53
1200mm (47.2")	800mm (31.5")	300mm (11.8")	D	<b>DM U258.123-SS6</b>	1,175	750	46.26	29.53



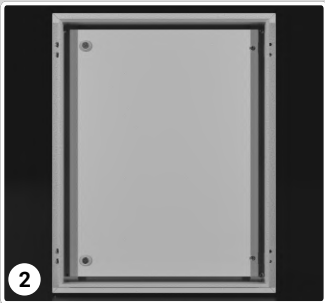
## Wall Mounting Bracket (AISI 316)

	Product Code	Description
1	975.001	Wall Mounting Bracket (AISI 316) PU: 4



## Swing Panel (Carbon Steel , Painted)

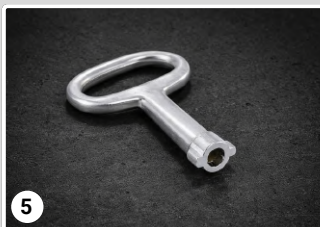
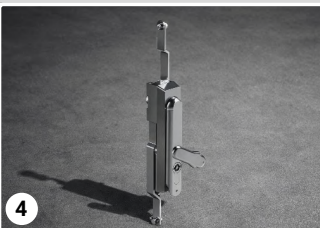
	Product Code	Description
2	975.034	HW : 400x300mm (15.7"x11.8")
2	975.044	HW : 400x400mm (15.7"x15.7")
2	975.045	HW : 500x400mm (19.7"x15.7")
2	975.046	HW : 600x400mm (23.6"x15.7")
2	975.068	HW : 800x600mm (31.5"x23.6")
2	975.610	HW : 1000x600mm (39.4"x23.6")
2	975.810	HW : 1000x800mm (39.4"x31.5")
2	975.812	HW : 1200x800mm (47.2"x31.5")



## Metal Plan Pockets (Carbon Steel , Painted)

	Product Code	Description
3	973.442	Single Door W :400,500mm(15.7",19.7") , Double Door W: 1000mm(39.4")
3	973.542	Single Door W :600mm(23.6") , Double Door W: 1200mm(47.2")
3	973.742	Single Door W :800mm (31.5")





## Locking

	Product Code	Description
1	951.263	Slotted Screwdriver Insert (Zinc) for 1/4 turn latch
1	951.260	5mm Double-bit Insert (Zinc) for 1/4 turn latch
1	951.264	Slotted Screwdriver Insert (AISI 316) for 1/4 turn latch
1	951.360	5mm Double-bit Insert (AISI 316) for 1/4 turn latch
2	975.022	1/4 turn latch Stainless Steel (AISI 316L) with screwdriver insert
2	975.020	1/4 turn latch Stainless Steel (AISI 316L) with 5mm Double-bit insert
3	975.103	Swing Handle Lock (Painted Zinc) with screwdriver insert
3	975.100	Swing Handle Lock (Painted Zinc) with 5mm Double-bit insert
4	975.104	Swing Handle Lock Stainless Steel (AISI 316L) with screwdriver insert
4	975.105	Swing Handle Lock Stainless Steel (AISI 316L) with 5mm Double-bit insert
5	952.101	Key 5mm Double-bit

# TEKPAN Products for Harsh Environments



Company Management  
System Approval



Canadian and US Standards  
and Approval



IEC Product Standards  
and Approval



European Standards and  
Compliance

**TEKPAN CANADA INC.**

29 Goertz Ave Stony Plain, Edmonton-Alberta T7Z 0H6 - CANADA

**Phone:** 780-722-9280 **E-Mail:** [info@tekpan.ca](mailto:info@tekpan.ca) **Web:** [www.tekpan.ca](http://www.tekpan.ca)

