

# TEOS MODULAR ENCLOSURE-BAYING SYSTEM



[www.tekpan.com](http://www.tekpan.com)





## TEOS MODULAR ENCLOSURE BAYING SYSTEM

Single Door : NEMA 12



## TEOS MODULAR ENCLOSURE BAYING SYSTEM

Double Door : NEMA 12



# TEOS MODULAR ENCLOSURE - BAYING SYSTEM

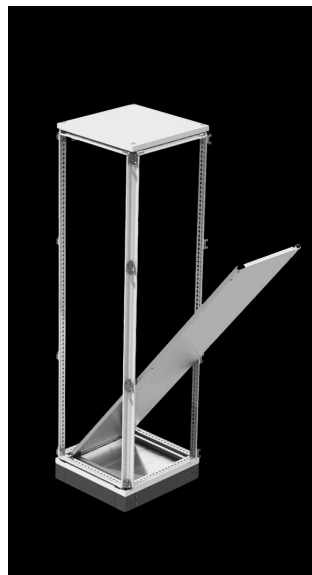
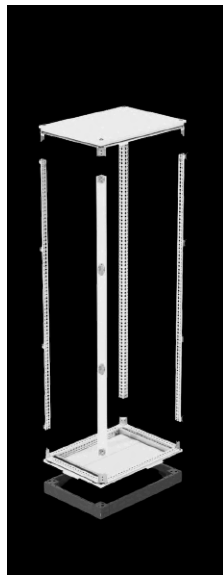
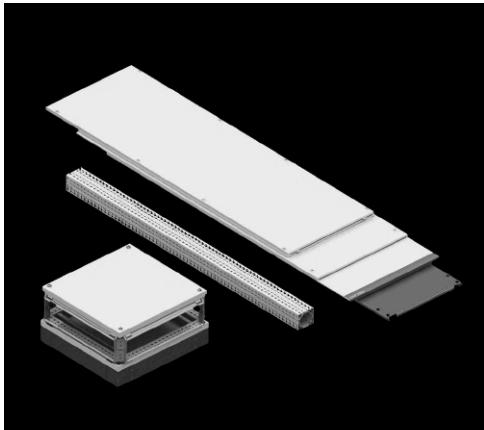
## FLAT PACK SYSTEM

Offered as a flat-pack solution, the TEOS series is designed for fast and easy assembly in a minimal amount of time. It also saves space during transportation and storage.

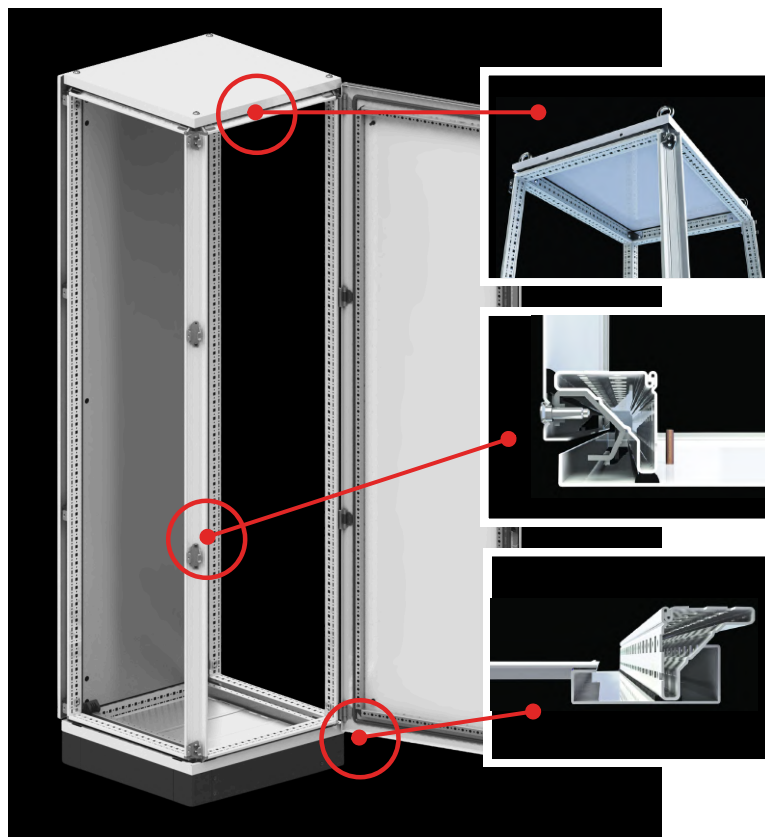
The modular structure allows:

- Creating enclosures without a mounting panel and/or without a door
- Creating enclosures with double mounting panels and front-rear doors

You can access  
the TEOS assembly video  
by Click Here



## SEALED AGAINST DUST, DIRT and WATER SPRAY , UP TO IP55 / NEMA 12

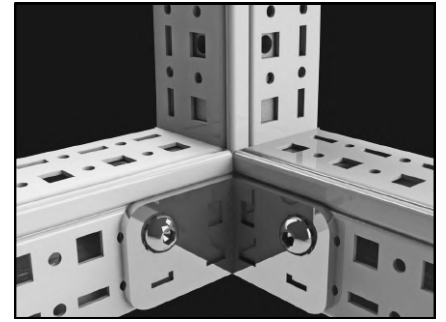


Sealing foam gaskets are used on the body door, back door, side panels and top panels of the enclosure. This gasket enables complete isolation between -40 and +100 C

All gaskets apply pressure on the convex frame curves. Dust and water particles are left in the space between the convex curves, and thus pressure on the gasket is prevented.

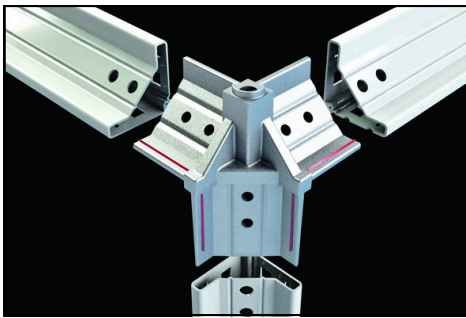
All seal applications on the covers press on the convex curves in the carcasses. Dust and water droplets are left in the area between these convex curves and the pressure on the seal is prevented.

# TEOS MODULAR ENCLOSURE - BAYING SYSTEM



Produced with a closed rail structure, Teos enclosure rails are clamped with a special non-welded clamping system. Their resistance to both vertical and horizontal pressures is extremely high compared to open rail structures. This force enables full resistance for the movement of the installed equipments and resistance in overcurrents.

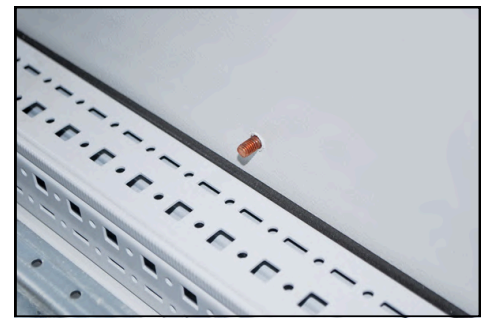
## TEOS EARTING CONTINUTIY



Placed on the aluminium corner combination, the earthing hooks are tightly mounted on the uncoated inner surface of the rails by means of eroding. Thereby, the earthing continuity is ensured for all rails and their parts.

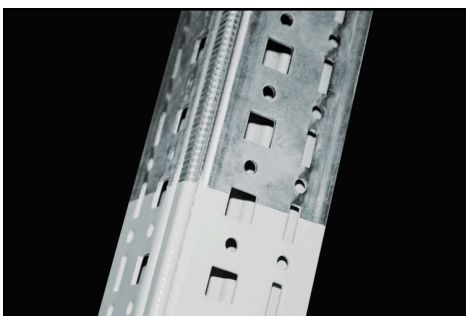


Placed on the bottom-top inner parts of the front door, the earthing screw increases conductive surface. Thereby, the front door is more efficiently grounded as the most important part to be grounded.



Applied to all other cover plates, the earthing screws allow for the complete earthing of all enclosure cover plates. Furthermore, TEOS allows for earthing all parts by use of special grounding washers.

## TEOS CORROSION PROTECTION



Teos closed frame made by galvanized steel (DIN EN 10142\_00 DX51 D+Z) and coated Nano-plating and powder coated from outside of the surface. Non-powder coated inside surface can not corrade because of the galvanized material style.

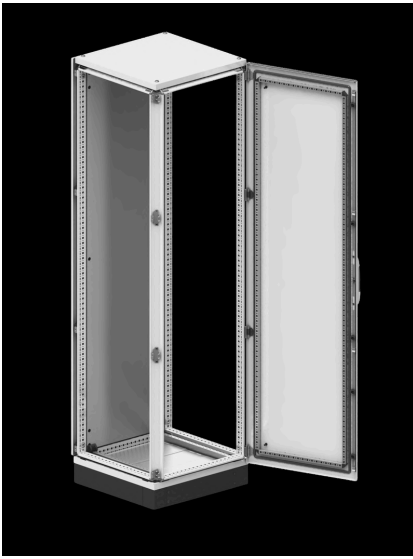


Manufactured from aliminum-cast (E-160) material, the rail connection corners do not corrode thanks to their aliminium structure.

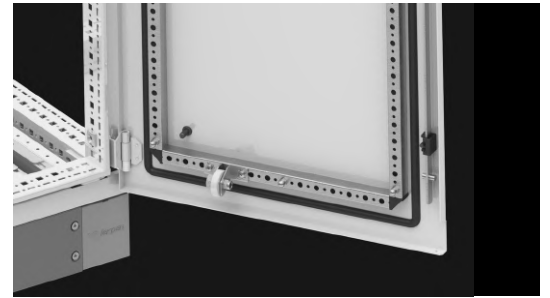
Applied to all other cover plates, the earthing screws allow for the complete earthing of all enclosure cover plates. Furthermore, TEOS allows for earthing all parts by use of special grounding washers.

# TEOS MODULAR ENCLOSURE - BAYING SYSTEM

## Lock and hinge placed in four points



## Wheel Application



The standard wheel application that comes with TEOS products prevents the door from sagging, balances the weight of the door, and prevents harsh closing due to wind or other factors, thus protecting panels and accents against any mechanical impact.

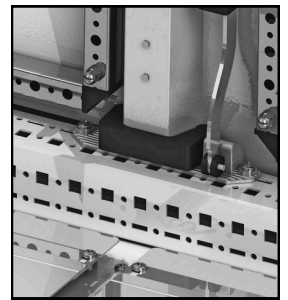
## Wide Space and Strong Door Rail



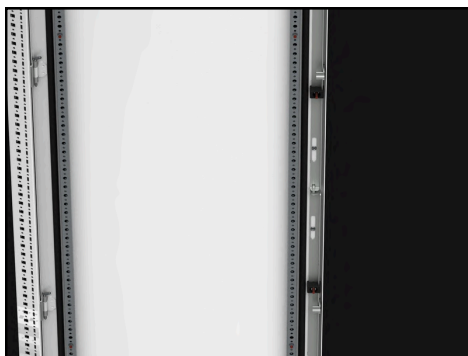
Since locking is performed on the rails, inner space of the cover plates allows for a maximum efficiency.

As the closed support rails are manufactured as a completely closed box, they are more resistant to bending. This ensures a stronger cover plate

## Comfort Handle Lock with Insert Protection



## Rigid and Durable Lock Structure



Lock failures experienced in most enclosures are prevented in TEOS. Thanks to their corrugated and long-lasting structure, the locking plates do not bend and corrode

# TEOS MODULAR ENCLSOURE - FLAT PACK ORDERING CODES



## Description:

Floor-Free standing, indoor type, modular enclosures (suitable for side-by-side and back to back combination)  
Single Solid Door , Double Solid Door and Mounting panels  
Standards Compliance: UL 50E and IEC 62208



## Protection Ratings:

Single Door: UL/cUL Type 1 , 12 - UL File Number E352599 / IP65 ( IEC 60 529)  
Double Door: UL/cUL Type 1 , 12 - UL File Number E352599 / IP54 ( IEC 60 529)

**Corrosion Resistance:** C3-M according to EN ISO 12944-2

**Impact Protection:** IK10 according to IEC EN 60529

## Door Types:

Single Door (1): 130° right hand hinged door ( reverse is possible) , 4-point latching tool-to-open liner handle with 5mm double-bit insert

Double Doors (2): 130° right hand hinged double doors , 4-point latching tool-to-open liner handle with 5mm double-bit insert to open right door , 2-point latching tool with inner handle to open left door

## Materials:

Door(s) 2mm , rear wall and roof 1,5mm : DC-01 Carbon Steel  
Frame 1,5mm, gland plates 1,5mm, Mounting Panel 3mm : DX51 Galvanized Steel

## Surface Finish:

Frame, door(s), rear wall, roof : Nano coating primed, RAL 7035 Light Gray with textured powder coated

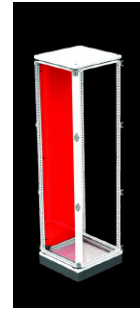
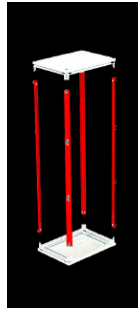
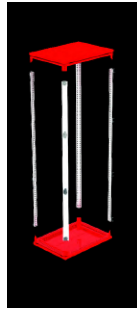
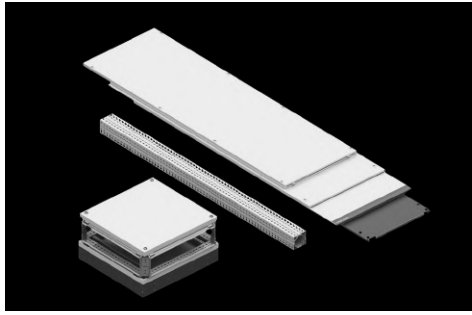
## Supply Includes:

Top-Bottom Group (Frame,roof,gland plates), Vertical Frames (4pcs), Door(s) , Rear Wall , Mounting Panel

## Options:

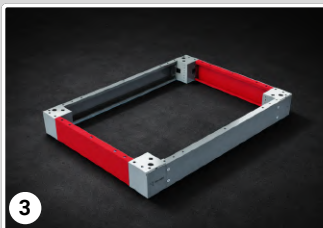
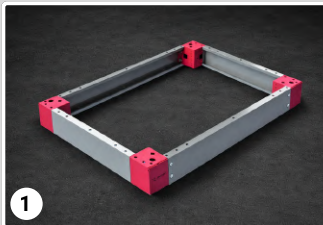
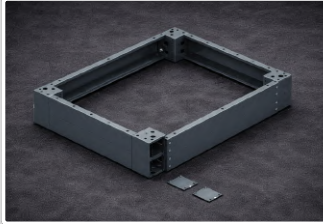
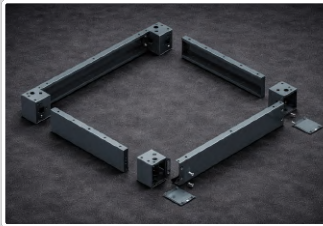
Plinth, side walls, baying kit, and other accessories

# TEOS MODULAR ENCLASURE - FLAT PACK ORDERING CODES



## Enclosure Size

Height (H)	Width (W)	Depth (D)	Door(s)	Top&Bottom Group	Vertical Frames	Door(s)	Rear Wall	Mounting Panel	M.Panel Size HxW
2000mm (78.7")	400mm (15.7")	600mm (23.6")	1	<b>701.460</b>	<b>702.200</b>	<b>734.420</b>	<b>703.420</b>	<b>707.420</b>	1888x288mm (74.3"x11.3")
2000mm (78.7")	600mm (23.6")	600mm (23.6")	1	<b>701.660</b>	<b>702.200</b>	<b>734.620</b>	<b>703.620</b>	<b>707.620</b>	1888x488mm (74.3"x19.2")
2000mm (78.7")	800mm (31.5")	600mm (23.6")	1	<b>701.860</b>	<b>702.200</b>	<b>734.820</b>	<b>703.820</b>	<b>707.820</b>	1888x688mm (74.3"x27.1")
2000mm (78.7")	1000mm (39.4")	600mm (23.6")	1	<b>701.060</b>	<b>702.200</b>	<b>734.021</b>	<b>703.020</b>	<b>707.020</b>	1888x888mm (74.3"x35.0")
2000mm (78.7")	600mm (23.6")	800mm (31.5")	1	<b>701.680</b>	<b>702.200</b>	<b>734.620</b>	<b>703.620</b>	<b>707.620</b>	1888x488mm (74.3"x19.2")
2000mm (78.7")	800mm (31.5")	800mm (31.5")	1	<b>701.880</b>	<b>702.200</b>	<b>734.820</b>	<b>703.820</b>	<b>707.820</b>	1888x688mm (74.3"x27.1")
2000mm (78.7")	1000mm (39.4")	800mm (31.5")	1	<b>701.080</b>	<b>702.200</b>	<b>734.021</b>	<b>703.020</b>	<b>707.020</b>	1888x888mm (74.3"x35.0")
2000mm (78.7")	1000mm (39.4")	600mm (23.6")	2	<b>701.060</b>	<b>702.200</b>	<b>734.020</b>	<b>703.020</b>	<b>707.020</b>	1888x888mm (74.3"x35.0")
2000mm (78.7")	1200mm (47.2")	600mm (23.6")	2	<b>701.260</b>	<b>702.200</b>	<b>734.220</b>	<b>703.220</b>	<b>707.220</b>	1888x1088mm (74.3"x42.8")
2000mm (78.7")	1600mm (63")	600mm (23.6")	2	<b>701.160</b>	<b>702.200</b>	<b>734.160</b>	<b>703.160</b>	<b>707.160</b>	1888x1488mm (74.3"x58.6")
2000mm (78.7")	1000mm (39.4")	800mm (31.5")	2	<b>701.080</b>	<b>702.200</b>	<b>734.020</b>	<b>703.220</b>	<b>707.020</b>	1888x888mm (74.3"x35.0")
2000mm (78.7")	1200mm (47.2")	800mm (31.5")	2	<b>701.280</b>	<b>702.200</b>	<b>734.220</b>	<b>703.220</b>	<b>707.220</b>	1888x1088mm (74.3"x42.8")



## Modular Plinth System

	Product Code	Description
1	708.100	Plinth Corners ,H:100mm(3.94") , PU:4
1	708.200	Plinth Corners ,H:200mm(7.88") , PU:4
2	709.140	Plinth Front&Rear Covers,H:100mm(3.94") , W:400mm(15.7") , PU:2
2	709.160	Plinth Front&Rear Covers,H:100mm(3.94") , W:600mm(23.6") , PU:2
2	709.180	Plinth Front&Rear Covers,H:100mm(3.94") , W:800mm(31.5") , PU:2
2	709.100	Plinth Front&Rear Covers,H:100mm(3.94") , W:1000mm(39.4") , PU:2
2	709.120	Plinth Front&Rear Covers,H:100mm(3.94") , W:1200mm(47.2") , PU:2
2	709.016	Plinth Front&Rear Covers,H:100mm(3.94") , W:1600mm(63") , PU:2
3	710.160	Plinth Side Covers,H:100mm(3.94") , D:600mm(23.6") , PU:2
3	710.180	Plinth Side Covers,H:100mm(3.94") , D:800mm(31.5") , PU:2

### Material

Corners , Covers : DX51 galvanized sheet steel  
Plastic Covers with corners: RAL 7012 ABS

### Surface Finish

Corners , Covers : Nano-coating pre-treatment with RAL 7012 powder coating

### Supply Includes

Corners : 4 modular plinth corner pieces , 4 plastic covers and mounting accessories  
Covers : 2 covers and mounting accessories

### Required

For 200 mm plinth height selection, 2 sets front& rear and side covers are required.

## TEOS Side Walls

	Product Code	Description
4	706.206	TEOS Side Walls , HD : 2000x600mm(78.7"x 23.6") , PU:2
4	706.208	TEOS Side Walls , HD : 2000x800mm(78.7"x 31.5") , PU:2

### Material

DC01 sheet steel

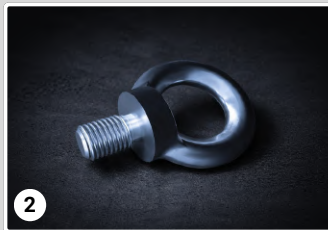
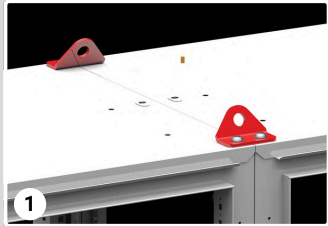
### Surface Finish

Nano-coating pre-treatment with RAL 7035 powder coating

### Supply Includes

2 side walls and enclosure mounting accessories

## Fixing and Transportation



	Product Code	Description
1	711.000	TEOS Baying Kit

### Baying Kit :

Consists of the components required for side-by-side

### Material

DC01 sheet steel

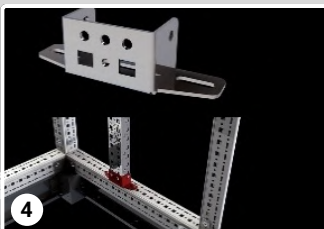
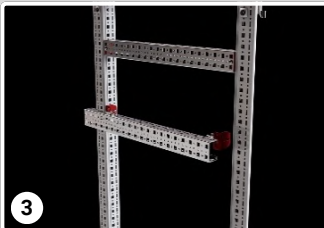
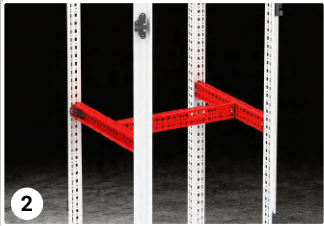
### Surface Finish

Zinc plated

### Supply Includes

2 double lifting brackets, 8 pcs M6 screws and nuts for vertical internal fixing, 2 depth adjustment brackets , 5.6 m enclosure coupling gasket, Mounting bolts

	Product Code	Description
2	612.000	Eyebolts , M12x30 , PU:4



## Mounting Panel Spacer

	Product Code	Description
1	712.200	Mounting Panel Spacer , H:2000mm(78.7")

## Mounting Rails 50x25mm section (Zinc-Plated)

	Product Code	Description
2	944.424	W/D : 600mm (23.6") PU:2
2	944.425	W/D : 800mm (31.5"), PU:2
2	944.426	W/D : 1000mm (39.4"), PU:2
2	944.430	H : 2000mm (78.7"), PU:4

**Required:** 2 fixing brackets are required for each cross rail.

## Mounting Rails 50x25mm section (Pre-Galvanized)

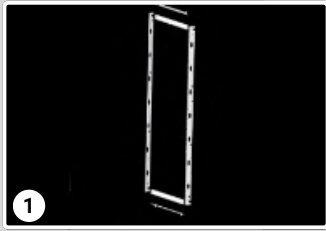
	Product Code	Description
2	944.522	W/D : 400mm (15.7") PU:2
2	944.524	W/D : 600mm (23.6") PU:2
2	944.525	W/D : 800mm (31.5"), PU:2
2	944.526	W/D : 1000mm (39.4"), PU:2
2	944.527	W/D : 1200mm (47.2"), PU:2
2	944.528	H :1600mm (63"), PU:2
2	944.530	H :2000mm(78.7"), PU:4

**Required:** 2 fixing brackets are required for each cross rail.

## Fixing Brackets for Mounting Rails 50x25mm section

	Product Code	Description
3	944.420	Snap-fit Brackets for Rail 50x25mm , PU:100
3	944.421	Snap-fit Brackets for Rail 50x25mm , PU:12
4	944.433	T-Type Brackets for Rail 50x25mm , PU:4
5	944.434	L- Type Brackets for Rail 50x25mm , PU:4

**T-Type & L-Type Brackets:** With its 25 mm slotted hole design, it provides flexible adjustment along the mounting axis for 50x25 mm mounting rails.



## Cover Plate Frame Set

	Product Code	Description
1	953.402	HW : 2000x400mm (78.7"x 15.7") , Net Height : 1800mm (70.87")
1	953.406	HW : 2000x600mm (78.7"x 23.6") , Net Height : 1800mm (70.87")
1	953.412	HW : 2000x800mm (78.7"x 31.5") , Net Height : 1800mm (70.87")

## Full plate (Swing Panel)

	Product Code	Description
2	713.420	HW : 2000x400mm (78.7"x 15.7")
2	713.620	HW : 2000x600mm (78.7"x 23.6")
2	713.820	HW : 2000x800mm (78.7"x 31.5")

**Note:** Provides IP3XC protection according to IEC EN 60529.

**Required:** For installation inside the enclosure, 1 Cover Plate Frameset matching the enclosure height and width is required.

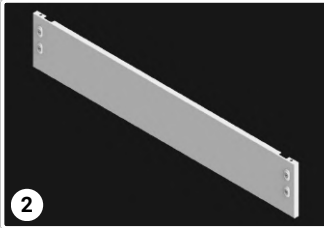
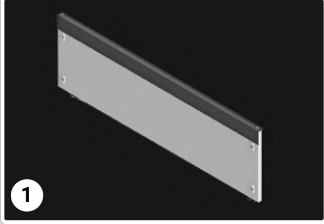
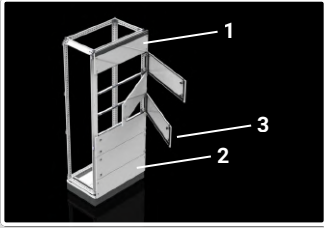
## Partial Cover Plates (Hinged)

	Product Code	Description
3	954.415	Enclosure W:400mm(15.7") , Plate Height:150mm(5.91") , Solid Type
3	954.430	Enclosure W:400mm(15.7") , Plate Height:300mm(11.81") , Solid Type
3	954.440	Enclosure W:400mm(15.7") , Plate Height:400mm(15.7") , Solid Type
3	954.460	Enclosure W:400mm(15.7") , Plate Height:600mm(23.6") , Solid Type
3	954.615	Enclosure W:600mm(23.6") , Plate Height:150mm(5.91") , Solid Type
3	954.630	Enclosure W:600mm(23.6") , Plate Height:300mm(11.81") , Solid Type
3	954.640	Enclosure W:600mm(23.6") , Plate Height:400mm(15.7") , Solid Type
3	954.660	Enclosure W:600mm(23.6") , Plate Height:600mm(23.6") , Solid Type
3	954.815	Enclosure W:800mm(31.5") , Plate Height:150mm(5.91") , Solid Type
3	954.830	Enclosure W:800mm(31.5") , Plate Height:300mm(11.81") , Solid Type
3	954.840	Enclosure W:800mm(31.5") , Plate Height:400mm(15.7") , Solid Type
3	954.860	Enclosure W:800mm(31.5") , Plate Height:600mm(23.6") , Solid Type

**Note:** Provides IP3XC protection according to IEC EN 60529.

**Required:** For installation inside the enclosure, 1 Cover Plate Frameset matching the enclosure height and width is required.

**Attention:** When selecting partial cover plates, the net internal height of the frame must be taken into consideration related with the cover plates' height placing.

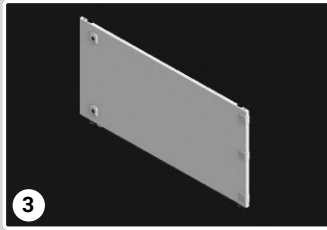


## Partial Fixed Top Cover

	Product Code	Description
1	854.410	Enclosure W:400mm(15.7") , Cover Height:100mm(3.94")
1	854.420	Enclosure W:400mm(15.7") , Cover Height:200mm(7.87")
1	854.610	Enclosure W:600mm(23.6") , Cover Height:100mm(3.94")
1	854.620	Enclosure W:600mm(23.6") , Cover Height:200mm(7.87")
1	854.810	Enclosure W:800mm(31.5") , Cover Height:100mm(3.94")
1	854.820	Enclosure W:800mm(31.5") , Cover Height:200mm(7.87")

## Partial Fixed Bottom Cover

	Product Code	Description
2	855.410	Enclosure W:400mm(15.7") , Cover Height:100mm(3.94")
2	855.420	Enclosure W:400mm(15.7") , Cover Height:200mm(7.87")
2	855.610	Enclosure W:600mm(23.6") , Cover Height:100mm(3.94")
2	855.620	Enclosure W:600mm(23.6") , Cover Height:200mm(7.87")
2	855.810	Enclosure W:800mm(31.5") , Cover Height:100mm(3.94")
2	855.820	Enclosure W:800mm(31.5") , Cover Height:200mm(7.87")



## Partial Doors

	Product Code	Description
3	853.415	Enclosure W:400mm(15.7") , Door Height:150mm(5.91")
3	853.420	Enclosure W:400mm(15.7") , Door Height:200mm(7.87")
3	853.430	Enclosure W:400mm(15.7") , Door Height:300mm(11.81")
3	853.460	Enclosure W:400mm(15.7") , Door Height:600mm(23.6")
3	853.615	Enclosure W:600mm(23.6") , Door Height:150mm(5.91")
3	853.620	Enclosure W:600mm(23.6") , Door Height:200mm(7.87")
3	853.630	Enclosure W:600mm(23.6") , Door Height:300mm(11.81")
3	853.645	Enclosure W:600mm(23.6") , Door Height:450mm(17.72")
3	853.660	Enclosure W:600mm(23.6") , Door Height:600mm(23.6")
3	853.680	Enclosure W:600mm(23.6") , Door Height:800mm(31.5")
3	853.815	Enclosure W:800mm(31.5") , Door Height:150mm(5.91")
3	853.820	Enclosure W:800mm(31.5") , Door Height:200mm(7.87")
3	853.830	Enclosure W:800mm(31.5") , Door Height:300mm(11.81")
3	853.845	Enclosure W:800mm(31.5") , Door Height:450mm(17.72")
3	853.860	Enclosure W:800mm(31.5") , Door Height:600mm(23.6")
3	853.880	Enclosure W:800mm(31.5") , Door Height:800mm(31.5")

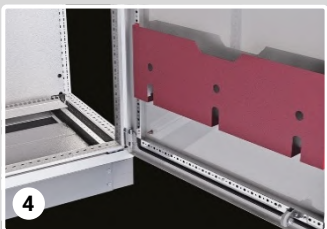
**Note:** Provides NEMA 1, 12 and IP54 protection while full placing of doors and covers.

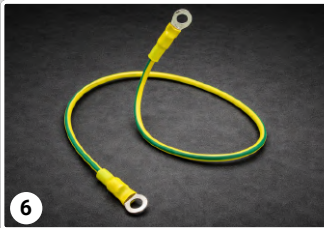
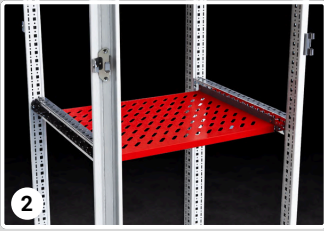
**Required:** For the installation of the hinged partial door, 1 Top Fixed Partial Cover and 1 Bottom Fixed Partial Cover are required.

**Attention:** When selecting the height option, the nominal mountable height of the enclosure must be taken into consideration. Nominal Enclosure Mounting Height = Enclosure Height (H) – 100 mm (3.94")

## Metal Plan Pockets

	Product Code	Description
4	994.706	Single Door W: 600mm(23.6") , Double Door W: 1200mm(47.2")
4	994.708	Single Door W: 800mm (31.5")
4	994.711	Single Door W: 1000mm (39.4")





## Dividing Panel (TEOS)

	Product Code	Description
1	935.007	HW : 2000x600mm (78.7"x 23.6")
1	935.008	HW : 2000x800mm (78.7"x 31.5")

**Note:** Provides IP3XC protection according to IEC EN 60529 while full placing of cover plates.

## Fixed Shelves

	Product Code	Description
2	945.200	WD : 600x600mm (23.6"x 23.6")
2	945.201	WD : 600x800mm (23.6"x 31.5")
2	945.202	WD : 800x600mm (31.5"x 23.6")
2	945.203	WD : 800x800mm (31.5"x 31.5")

### Required

For installation inside the enclosure, 2 pieces of 50x25 mm mounting rails matching the enclosure depth are required.

## Locking

	Product Code	Description
3	950.123	TEOS Lineer Handle Lock (Complete Lock) with 5mm Double-bit Insert
4	952.101	Key 5mm Double-bit

## Grounding Straps and Braids

	Product Code	Description
5	991.200	Grounding Braid M6 - 12x3x163mm (0.59"x0.12") , PU:10
5	991.201	Grounding Braid M6 - 12x3x260mm (0.59"x0.12") , PU:10
6	991.208	Ground Strap M8 -16mm <sup>2</sup> (6AWG) Yellow-Green 210mm(8.26") ,PU:5
6	991.209	Ground Strap M8 -16mm <sup>2</sup> (6AWG) Yellow-Green 260mm(10.23") ,PU:5
6	991.210	Ground Strap M8 -16mm <sup>2</sup> (6AWG) Yellow-Green 310mm(12.20") ,PU:5

# TEKPAN Products for Harsh Environments



Company Management  
System Approval



Canadian and US Standards  
and Approval



IEC Product Standards  
and Approval



European Standards and  
Compliance

**TEKPAN CANADA INC.**

29 Goertz Ave Stony Plain, Edmonton-Alberta T7Z 0H6 - CANADA

**Phone:** 780-722-9280 **E-Mail:** [info@tekpan.ca](mailto:info@tekpan.ca) **Web:** [www.tekpan.ca](http://www.tekpan.ca)

